



OF AMERICA



CARING FOR A NATION FOR 75 YEARS

Dear Friend,

This year, Emunah of America and the State of Israel celebrate their 75th anniversary. Emunah of America is proud to have supported the establishment of the State of Israel, responding to the call of our Israeli brothers and sisters by building children's homes and schools, a college, daycares, advancing the status of women, and funding social service infrastructure and programs. Since its inception, Emunah, a women-led religious Zionist organization, has been on a mission of CARING FOR A NATION.

During those early years, we passionately supported the needs of Israel's most vulnerable. Today, Emunah of America remains steadfastly committed to the evolving needs of Israeli society.

With the support of a dedicated board and generous donors like you, we continue our work of expanding opportunities for philanthropy and forging new connections, while supporting legacies of giving. In this spirit of expansion, we formed new partnerships in 2022 with Kol HaNearim and Telem.

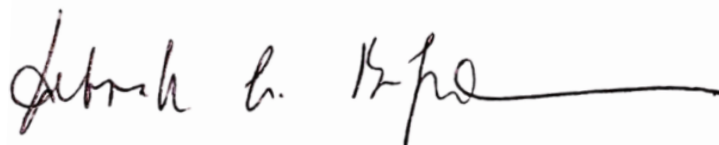
Kol HaNearim, a transformative summer camp program, sends 200 high school and college-aged young adults from the United States to volunteer in the five Emunah children's homes in Israel. It is a rewarding and life-changing summer experience for the volunteers and the children living in our homes. Emunah is proud to provide scholarships for American volunteers and to support the programming in the Emunah homes.

Telem, one of Israel's most unique organizations, offers a variety of specialized educational, social and therapeutic programming, and vocational training tailored to the diverse needs of Jerusalem's most vulnerable teenage girls, most of whom originate from ultra-Orthodox families. Many of these girls ran away from their homes due to abuse and neglect, and to survive on the streets, sell drugs and turn to prostitution. These young women also use alcohol and drugs to assuage their emotional pain and loneliness. Telem's pioneering approach to rehabilitate these young women utilizes Emunah's counseling services and partners with a variety of programs aimed at preventing the downhill spiral that many of these teenagers experience.

Our team of dedicated volunteers and professional staff have come together to carry out our work more efficiently than ever. We are expanding our support of Israel's most vulnerable and bringing exciting programs and events to new U.S. communities. We believe that partners in chesed are stronger together.

75 years later, Emunah of America remains unwavering in its support for Emunah Israel and our partner organizations, providing a better future for Israel's most vulnerable residents. We invite you to read this report which highlights Emunah's extensive programming, and we welcome the opportunity to speak with you and answer any questions you may have.

With our sincerest gratitude for supporting our mission and investing in our work,



Debbie Bienenfeld
National President



Laurie Szerincer
Chief Executive Officer

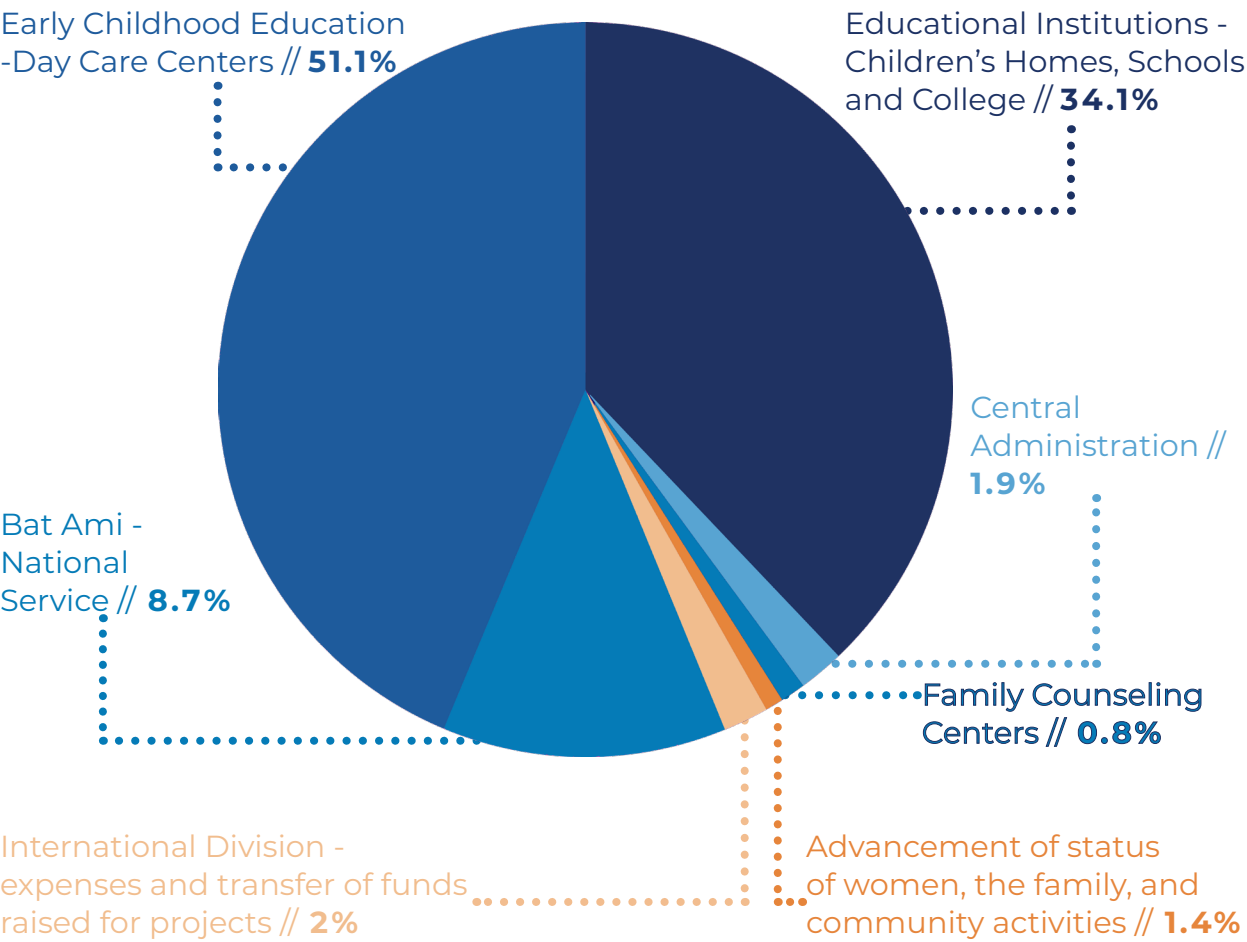


Emunah of America provides donors, advocates, and volunteers with an opportunity to transform the lives of the most vulnerable at-risk children and families in Israel, and special projects in the United States. For 75 years Emunah of America has driven social change by leading, mobilizing, and engaging volunteers to raise the necessary funds to change and impact lives. Emunah of America's activities focus on supporting education and social welfare programs aimed at strengthening the Jewish family, advancing women's status, and Holocaust and anti-bias education in Israel and the United States. Our primary beneficiaries are Emunah Israel educational programs and homes for children-at-risk, and other non-profits that partner with Emunah of America.



Emunah Israel 2023

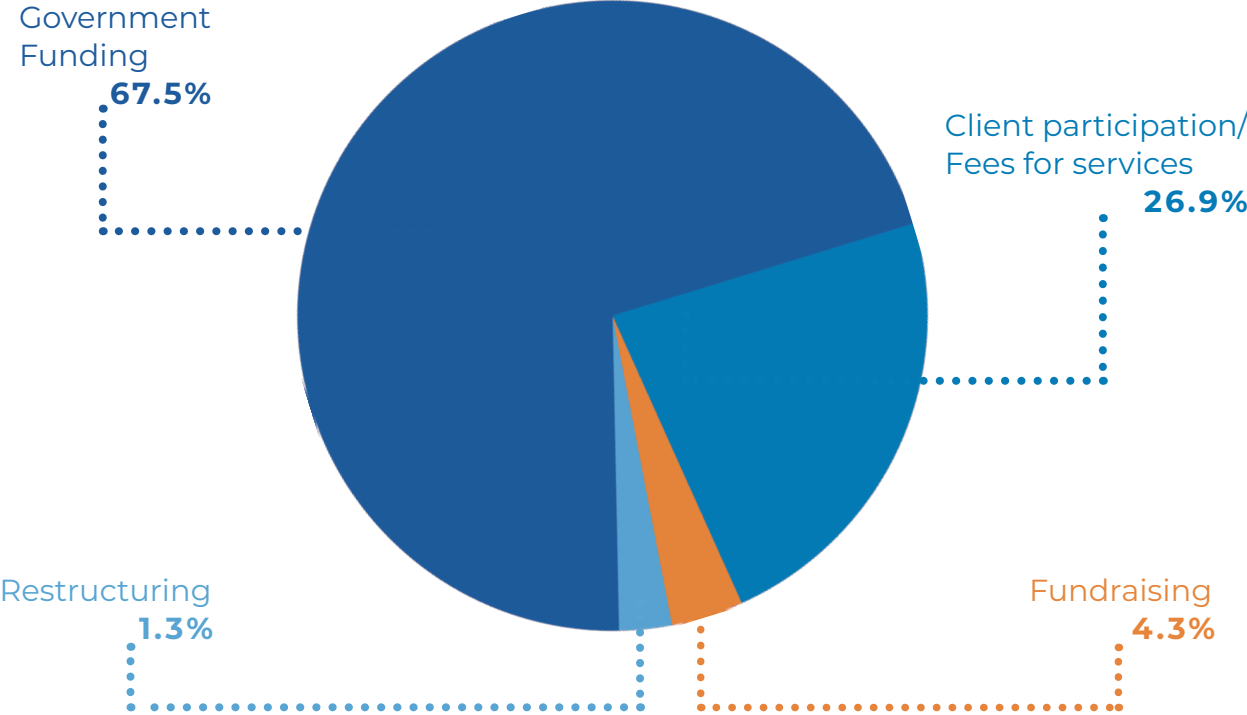
BUDGET EXPENSES



Expenses in USD (\$1=3.43)	
Early Childhood Education - Day Care Centers	\$62,196,863
Educational Institutions - Children's Homes, Schools and College	\$41,483,996
Bat Ami - National Service	\$10,516,659
Advancement of status of women, the family and community activities	\$1,660,525
Family Counseling Centers	\$975,923
International Division - expenses and transfer of funds raised f or projects	\$2,476,222
Central Administration	\$2,286,864
TOTAL:	\$ 121,597,052

Emunah Israel 2023

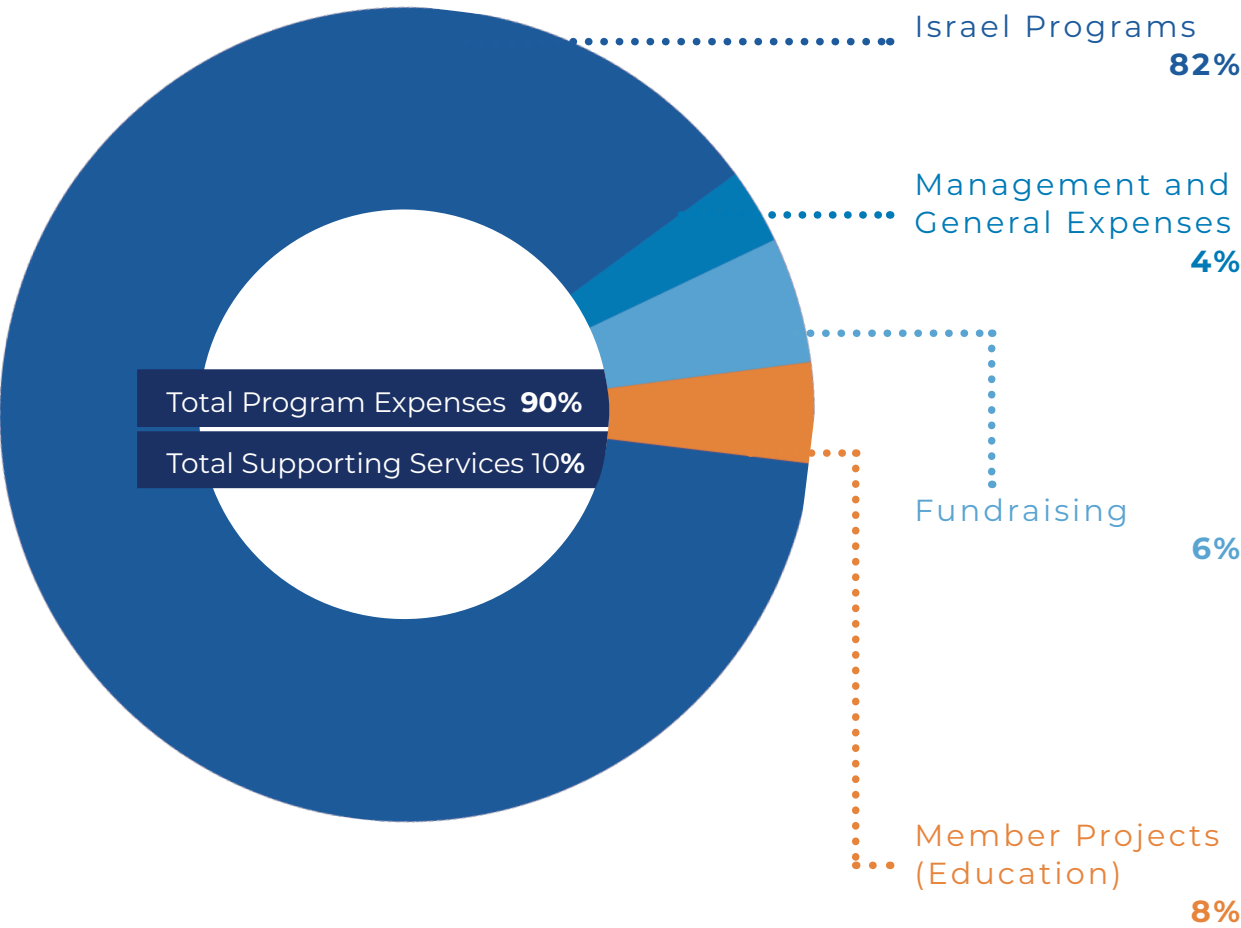
BUDGET REVENUE



Revenue in USD (\$1=3.43)	
Early Childhood Education - Day Care Centers - Government	\$31,049,562
Early Childhood Education - Day Care Centers - Tuition	\$30,758,017
Educational Institutions - Government	\$40,590,379
Bat Ami - National Service - Government	\$10,524,781
Advancement of status of women, the family, and community activities - Fundraising and participation fees	\$1,107,871
Family Counseling Centers - Fees for services	\$803,207
Fundraising - Overseas: Emunah Israel, World Emunah and international Emunah affiliates	\$4,207,842
Fundraising in Israel	\$1,000,000
Restructuring and efficiency	\$1,555,393
TOTAL:	\$ 121,597,052

Emunah of America

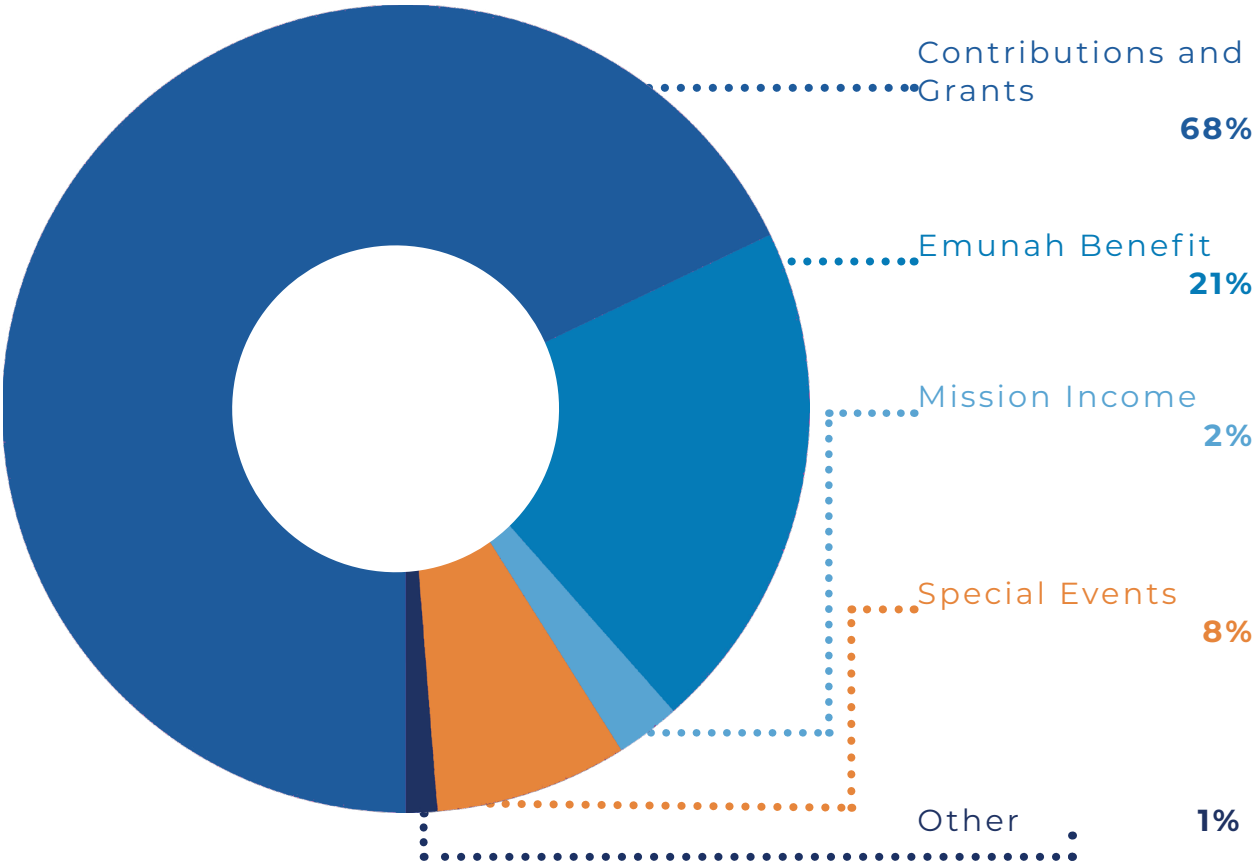
2022 EXPENSES



EXPENSES	
Israel Programs	\$3,976,160
Member Projects (Education)	\$377,983
Management and General Expenses	\$183,219
Fundraising	\$281,729
TOTAL:	\$4,819,091

Emunah of America

2022 REVENUE

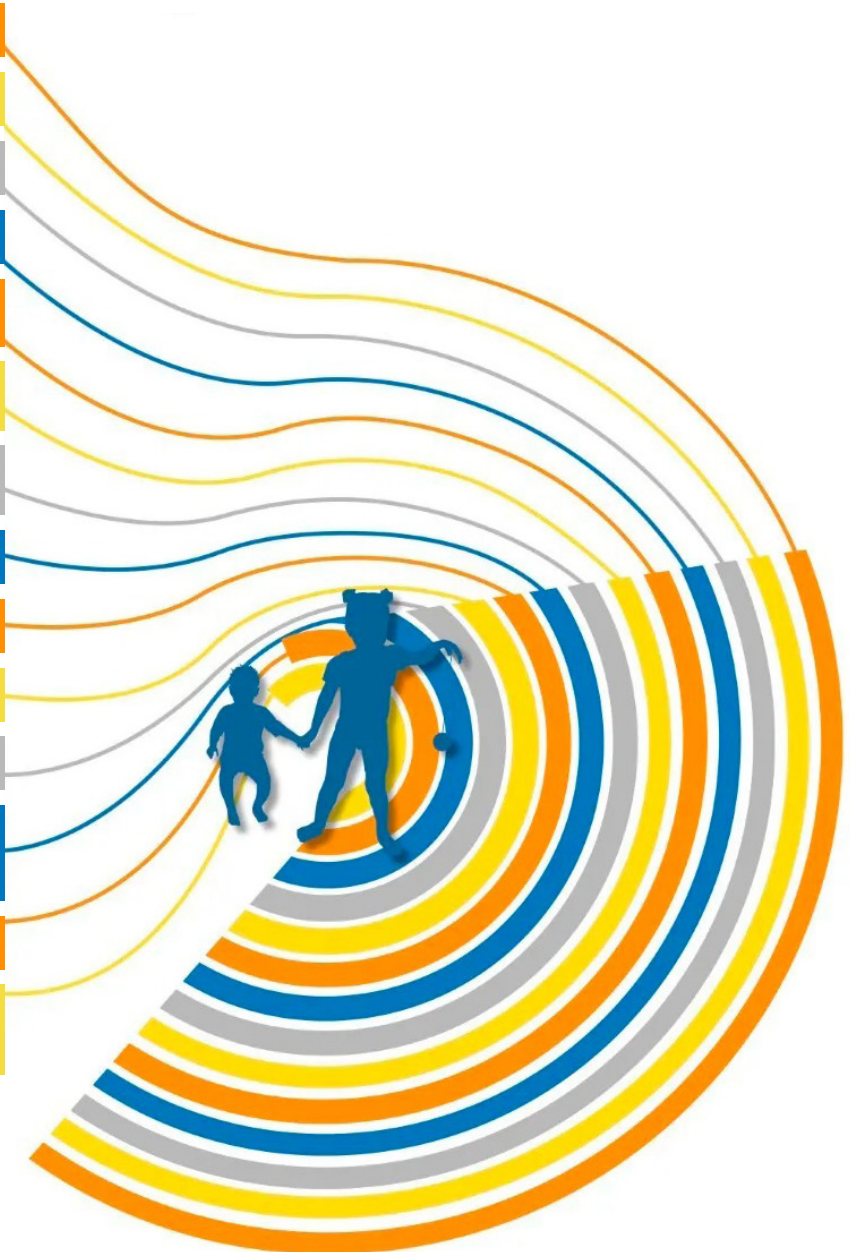


REVENUE	
Contributions and Grants	\$3,388,917
Emunah Benefit (NET)	\$1,026,391
Mission Income	\$127,978
Special Events (NET)	\$385,157
Other (NET)	\$62,160
TOTAL:	\$4,990,603

Summary of Emunah IN NUMBERS

NUMBERS AS OF DECEMBER 2022

9	Multi-Purpose Day Care Centers
6,000	Children in Day Care Centers
2,380	Emunah staff in Israel
5	Children's Homes with 648 children
2	Emergency Crisis Centers for Children and Teenagers with 75 kids annually
1	Domestic Violence Shelter - Caring for 12 women and 30 children
10	Family Therapy and Counseling Centers with over 750 clients a week
4	High Schools with 1,115 girls attending
1	College with 393 female students
3,200	Young women in Sherut Leumi - National Service Volunteers
141	students in Machon Be'er Emunah
1,200	girls across high school, post high school programs, employment programs, and youth centers (Telem)
150	youth and staff in Kol HaNearim
9	Member Countries including: America, Canada, France, Switzerland, UK, South Africa, Australia, Brazil & Israel



WAYS TO GIVE

BEQUESTS/LIVING TRUSTS

A charitable bequest is one of the easiest and most flexible ways to leave a gift to Emunah. You can include language in your will or trust specifying a gift to be made to family, friends or Emunah as part of your estate plan. The bequest can be a gift of cash, securities, or real property, made through your will or living trust. The amount of the gift is exempt from estate taxes.

RETIREMENT ASSETS

Did you know that up to 60-70% of your retirement assets may be taxed if you leave them to your heirs? You may wish to leave other types of assets to your heirs and make a gift to Emunah in your will or trust of your IRA, 401(k), 403(b), pension or another tax-deferred plan. If you designate Emunah as beneficiary, your IRA assets will not be taxed at your death, providing the full value of your

IRA ROLLOVER

If you, or someone you know, are 70½ or older, you may be interested in a way to lower the income and taxes from your IRA withdrawals. An IRA charitable rollover to Emunah is a way you can help continue our child-abuse-prevention work, while benefitting yourself this year. It can reduce your taxable income,

GIFTS OF LIFE INSURANCE

If you have a life insurance policy that has outlasted its original purpose, consider making a gift of your insurance policy to Emunah. You may do so by contacting your life insurance provider, requesting an ownership change and beneficiary designation from the insurer, and providing Emunah as the owner and beneficiary of your policy. Emunah encourages the use of fully paid insurance policies as charitable gifts. You may be entitled to an income tax charitable deduction for the gift of the policy.

CHARITABLE REMAINDER TRUSTS

If you are concerned about the high cost of capital gains tax with the sale of an appreciated asset, a charitable remainder trust may offer the solutions you need. You may defer capital gains tax and receive a charitable income tax deduction. Here's how it works: you or someone you designate will maintain a current interest in the trust for your lifetime or a set number of years, and then the remainder interest passes to Emunah. A unitrust pays the current beneficiary a fixed percentage of the trust's value each year. An annuity trust pays the current beneficiary a fixed amount each year based on a percentage of the trust's value on the date of gift. A current charitable deduction for the present value of either gift may be available in the year of gift and is based on IRS actuarial tables. You may make additional gifts to the principal of the charitable remainder unitrust in future years. An annuity trust, however, cannot receive additions. If the donated assets consist of appreciated securities, capital gains taxes may be deferred. Assets gifted to a charitable remainder trust will also reduce your estate tax exposure.

CHARITABLE LEAD TRUSTS

If you are looking for a way to pass on some of your assets to your family while reducing or eliminating gift or estate taxes, a charitable lead trust is an excellent option. Here's how it works: you fund a trust that pays Emunah a set amount for several years. You may also plan for this fund to be established at your death. You may receive a gift tax deduction at the time of your gift, or your estate may receive an estate tax deduction at the time of your death in the case of a bequest. After a set period of time, your family receives the trust assets plus any additional growth in value. Depending on how the charitable lead trust is structured, you may also benefit from an income tax deduction.

STOCKS, BONDS, MUTUAL FUNDS, OPTIONS

Emunah gladly accepts gifts of stocks, bonds, mutual funds or options. Contact your broker about a TOD (Transfer on Death) or beneficiary designation.

GIFTS OF PROPERTY

Almost any form of property – real estate, personal property, vacation homes, insurance policies and business interests – can provide a suitable charitable gift. If you are considering a gift of property, please consult your attorney, accountant, financial advisor and Emunah to ensure that the gift will meet your intention to support Emunah, in addition to your financial interests.



Shoham #whyi**CARE**

Shoham, Educational Director at an Emunah home in Even Shmuel

“At Emunah, someone is always ready to listen to the children and help them. It’s all about caring. Children come to us after being rejected by previous schools and foster homes. ***You must believe in them.*** You must believe that they are

much stronger than what you see the first time you meet them. The only way to help them go further is to help them find their own strength and work through that with them.

We are here only to show them the way.

”



Eli

#whyiDREAM

Eli, a graduate of an Emunah home currently has two jobs as he saves money for his studies

“When I was 12, my family situation was very bad and social workers suggested I attend the day program at an Emunah Children’s Home. My days were filled with activities, and I grabbed every opportunity they offered with both hands. **Emunah encouraged me to be the best I could be**, and I worked hard to prove myself. It was at Emunah that I first learned to love music. **The music teacher believed in me and helped me to see that I have talent** and can use music to heal my pain. **To study music is my dream and I know, thanks to Emunah, that I can make it come true.**”



Nancy #whyiEMPOWER

Nancy, Director, Emunah Family Counseling Center

“I use a form of counseling that allows clients to find the ‘alternative story,’ to address the things about themselves in their past that will **give them the strength to recover.** I see people climb out of their troubles. I help patients take a stand against despair and find their forgotten strengths. For example, when a woman comes in for therapy - that moment where she realizes that she is being abused and wants help - **this is the inner voice; and to hear that voice get stronger and stronger is extremely empowering.** **I believe in the goodness of people, and I believe in their ability to heal.**”



Mindy

#whyi VOLUNTEER

Mindy Stein, Past National President

“ I was fortunate to be raised in a family where I was inspired by my mother’s, Evelyn Silverberg Hoffman A”H, activities on behalf of her Toronto Emunah chapter, and by my husband’s mother, Shirley K. Stein A”H, who had also been a dynamic national officer of Emunah before her tragic passing at the age of 39. They both worked tirelessly on behalf of Emunah’s underprivileged and abused children and disadvantaged families, and in both families, there was a fervent love for the State of Israel. In 1991, my husband and I participated in an Emunah Lawyers’ and Accountants’ mission to Israel, and that is when we first really understood the scope and quality of Emunah’s vital work in Israel. We visited one of our five Emunah children’s residential homes for abused and abandoned

children, one of our Emunah family crisis and counseling centers in Sderot, a multi-purpose Day Care Center, our after-school program in Hebron, and we saw the superb education our Emunah children and young women receive at our Appleman College of Art and Technology and at the Marilyn Cole and Francie Zusman-Sina Torah and Arts High School. ***When we saw the children’s smiling faces and the way they were advancing educationally and socially, I knew I wanted to be part of an organization that can make such a difference in the lives of thousands of children and families, and help them become strong, independent, and well-adjusted, productive members of Israeli society throughout the country.***




A portrait of a young woman with long, wavy brown hair, smiling warmly at the camera. She is wearing a green ribbed sweater. The background is a soft, out-of-focus grey.

Sivan #whyi **SUCCEED**

Sivan, student at an Emunah high school, returned to Israel without her family and lived independently while studying computer science

“Emunah doesn’t only provide education. They also provide warmth, strength, and hope. The teachers are really kind. They don’t judge anyone. They accept you as you are. They support you in whatever you want to do. They give you hope. **I am not sure I would have had the opportunity to do bagrut (matriculation) and to achieve so many things without Emunah.** Later this year I will start to study computer engineering in college. I would have never felt the strength to achieve this goal without the support of Emunah. **I succeed because I have a purpose. Building a family. Getting a good job. Being happy.”**

A large, stylized blue double quote mark at the end of the text.

A portrait of Mazal, a woman with dark curly hair, smiling. The background is a blurred outdoor setting with green foliage and a building.

Mazal

#whyiGIVEBACK

Mazal, social worker in an Emunah home where she lived as a child when she made Aliyah from Ethiopia with her family

“Returning to the place where I once lived, working now as a social worker, is really a powerful experience. I thought it would be an amazing opportunity to close the circle and to ***give back to the place that gave me so much.*** Having lived in the home allows me to better understand the children, guide them, and help

them to develop a healthy relationship with their family.

Even if I give a lot, and it's my job, I receive so much as well. It is so important to give.

When I returned, it felt like I was back home. I can 'stand in their shoes' and understand what they feel.”



Billet-Sugarman Family

#whyiGIVE

The Billet-Sugarman family, now in its fourth generation of leadership at Emunah of America

“ Giving to others has always been an essential midah that my parents Leo and Shirley Billet z”l held dear. From an early age, my parents instilled in us the importance of giving back to our community, Am Yisrael, and to Eretz Yisrael. My mother, Shirley, z”l, was one of the founding members of Emunah and a past national president. Her leadership and tenacity helped build Emunah and the state of Israel, leaving a legacy of giving and communal responsibility.

I have been honored with the opportunity to continue her work in advocating for Emunah and participating as a member of the National Board. My parents were role models for my children

and grandchildren and their legacy continues through them. My granddaughter, Emma, and grandsons Ilan and Doron celebrated their Bat and Bar Mitzvot with the children of Achuzat Sara. For his Bar Mitzvah project, my grandson Ilan raised funds for a new running program at the Emunah Achuzat Sara home in memory of his great-grandmother. This enabled 30 children to train and successfully run in the Jerusalem marathon a few weeks ago.

Our family hopes to continue the chain of giving which my parents began so long ago.

-Lynn Sugarman





2021-2023/5783 PRESIDIUM

Debbie Bienenfeld, National President
Johanna Guttmann Herskowitz, Chairman of the Board
Laurie Szenicer, Chief Executive Officer

PAST NATIONAL PRESIDENTS

Eva Adelman*	Ruth Chernofsky*	Blanche Gershbaum*	Betty Roseman*	Jean Teichman
Gladys Baruch*	Charlotte Dachs	Johanna Guttmann Herskowitz	Sylvia Schonfeld	Renee Weiss*
Dorothy Bernstein*	Miriam Federbush*	Fran Hirmes	Beverly Segal	Toby Willig*
Lila Bernstein*	Sylvia Fein*	Heddy Klein	Shirley Singer*	
Shirley Billet*	Sondra Fisch	Melanie Oelbaum	Karen Spitalnick	*deceased
Chana Cohen*	Marcia Genuth	Rosalie Reich	Mindy Stein	

EXECUTIVE BOARD

Rhonda Avner	Marcia Genuth	Johanna Guttmann Herskowitz	Sue Nadritch	Sylvia Schonfeld
Debbie Bienenfeld	Amy Gibber	Fran Hirmes	Careena Parker	Karen Spitalnick
Shaindy Brothman	Elizabeth Gindea	Shaynee Kessler	Lisa Reich	Mindy Stein
Charlotte Dachs	Anne Gontownik	Heddy Klein	Michelle Salig	Susan Weinstock
Bonnie Eizikovitc	Chanie Greif	Esther Lerer	Harriet Saperstein	Myrna Zisman
Sondra Fisch	Sora Grunstein	Lynn Mael	Lisa Schechter	

NATIONAL BOARD

Cheryl Borenstein	Beth Goldman	Chani Lichtiger	Tamar Scharf	Rena Steigman
Raina Butler	Helena Goldstein	Cecelia Margules	Barbara Schreck	Ruth Stillman
Chani Chesner	Abby Herschmann	Janine Nathan	Dalia Schwalb	Lynn Sugarman
Shelli Dachs	Greta Hirmes	Odit Oliner	Michelle Schwartz	Marla Turk
Seri Diamond-Zamir	Doris Hirsch	Elana Oved	Shari Shapiro	Estelle Wiener
Bari Erber	Malka Hursarsky	Mindy Orlinsky	Nadine Shatzkes	Charlotte Liechtung Zaslowsky
Surella Feit	Malkie Klein	Naava Parker	Caroline Schloss	
Cookie Fishel	Shelli Kuflik	Tali Pines	Arlene Silverstein	
Bernice Gelman	Evie Leifer			

DEVELOPMENT COMMITTEE

Careena Parker, <i>Committee Chair</i>				
Samantha Bryk	Amy Gibber	Fran Hirmes	Esther Lerer	Shari Shapiro
Abby Alon Kellner	Anne Gontownik	Susan Nadritch	Tamar Scharf	Mindy Stein

YOUNG LEADERS

Sophia Alpert	Samantha Bryk	Lilly Katz Gontownik	Abby Alon Kellner	Yishai Schwartz
Arielle Assayag	Maya Golan	Avital Rosen Hod	Shira Ben David Shaffer	Ben Zeitz
Rachel Gindi Best	Esti Goldblatt	Dalia Scheiner Horowitz	Miriam Rosen	

Emunah of America GIVING SOCIETY

Emunah of America is dedicated to meeting the needs of Israel for over 75 years. Your donations help us fulfill our mission of **CARING FOR A NATION impacting over 10,000 Israelis a day. Emunah of America appreciates your partnership in chesed.**

WE COULD NOT DO IT WITHOUT YOU!

Donations can be made online at www.emunah.org/donate.
For additional information about making a gift to Emunah of America, joining our Giving Society, or to inform Emunah of a bequest, please contact info@emunah.org or 212-564-9045

AMBASSADOR
\$300,000+

Joseph Safra Foundation

BUILDER
\$200,000 - \$299,999

Sheldon Chanales

Rabbi Doniel Kramer in Memory of Rose S. Kramer a"h

Judith Safner Living Trust

BENEFACTOR

\$100,000 - \$199,999

Hiroko and Robert Davidow

Arbesfeld-Salig Family

CUFI Houston Federation

Max and Sunny Howard Memorial Foundation

Living Legacy Foundation

Dr. Ronald London a"n Better Health for a Better Life Initiative

Spitalnick and Steigman Famillies in Memory of Jonas Ehrlich

GUARDIAN

\$50,000 - \$99,999

Heddy and Mendy Klein

Cecelia and Rubin Margules

Danielle and Jeremy Parker

Sandra and Gerald Seligsohn

MENTOR

\$25,000 - \$49,999

Anonymous

Emma Laskin and Bart Baum

Melody and Claude Bernstein

Federation for Jewish Philanthropy of Upper Fairfield County

Gontownnik Family

Eve and Stephen Milstein

Carol and Joseph Tuchman

Young Israel of Scarsdale

Dr. Ronald London a"n

Better Health for a Better Life Initiative

TRAILBLAZER

\$10,000 - \$24,999

Anonymous

Anonymous

Shifra and Daniel Bendheim

Tamara and Joseph Berkowitz

Debbie and Saul Bienenfeld

Deborah and Michael Blumenthal

Congregation Bnai Yeshurun

Congregation Rinat Yisrael

East Hill Synagogue

Emunah of Deerfield Beach

Susan Edwards

Bonnie and Jack Eizikovitz

Ronnie and Albie Faber

Hammerman, Kessler
and Lifshitz Families

Florence and Joseph Geliebter

Amy and Daniel Gibber

Elizabeth and Joshua Gindea

Estelle a"n and Leonard Glass

Myron Glucksman

Irene and Andrew Goldberg

Sabine Himmelfarb

Fran and Alan Hirmes

Rosanne and Rabbi Mitchell Hurvitz

Shelli and Paul Kuflik

Leilui Nishmat Charity

Kevin Malone

Karen and Eric Miller

Temi and Bernard Monderer

Irving Moskowitz Foundation

Susan and Brett Nadritch

Gitta Nagel

Nash Family Foundation

Sharon and David Rauch

Edith Rieder

Melodie and Martin Scharf

Lisa and Jonathan Schechter

Michelle and Michael Schwartz

Carl Shapiro

Barbara J. and Mark Silber

The Slomo and Cindy Silvian
Foundation

Naomi and Abraham Sinnreich

Sandy and Alexander Solomon

Evelyn and Averim Stavsky

Shlomit and Jonathan Goldberg-Stein

Stern Family Foundation

Stewart J. Rahr Foundation

Lynn Sugarman

UJA JCC Greenwich

Arianne and Moshe Weinberger

Renata and Alexander Weiss

INNOVATOR

\$3,600-\$9,999

Shari and Robert Alter	Evie and Alden Leifer
Sharon and Benjamin Berger	Esther and Paul Lerer
Dafna and Brian Berman	Marlene and Philip z"l London
Mayer Chemtob	Susan London
Susan and Elliot Cohen	Lynn and Joel Mael
Phyllis and Joseph Eisenman	Iris and Shalom Maidenbaum
Emunah Aliza Lower Eastside Chapter	Mandel Chesed Foundation Inc
Emunah Brooklyn Region Chapter	Estate of Sylvia Morgan
Sheryl Katz and Ernest Elias	Careena and Drew Parker
Bari and Daniel Erber	Naava and Jeffrey Parker
F&F Family Fund	Benita and David Penner
Miri and Mordecahi Faber	Gidon Rothstein
Sarah and Yossi Faber	The Maks & Lea Rothstein Charitable Trust
Betty and Alan Feldman	Tina and Paul Rotstein
Sondra and Martin Fisch	Barbara and Gerald Schreck
Yael and Assaf Fligelman	Debra and David Segal
Laivi Forta	Esther Sorscher
Dena and Morton Frucht	Gabriella and Noam Spinowitz
Caron and Steven Gelles	Mindy and Martin Stein
Beth and Mark Goldman	Laurie and Harry Szenicer
Aviva and Paul Gross	Ann and Howard Taber
Jordana and Adam Grunfeld	Tami and Samuel Wald
Lieve and Joseph Guttmann	Rita and Howard Weiss
Marilyn and Joseph Harary	Susan and Mark Wiesen
Johanna Guttmann and Robert Herskowitz	Phyllis and Mel Zachter
Faiga and Michael Joseph	Meyer Zinn
Esther and Mitchell Kaplan	Myrna Zisman
Jessica and Laizer Kornwasser	

SUPPORTER

\$1000-\$3599

Judith and Cyrus Abbe
Nicole and Raanan Agus
Leah and Jacob Almo
Myrna and Charles Alpert
Anonymous
Sharon and Harold Aspis
Daisy and Alberto Attar
Joyce and Eric Austein
Elisabeth and Blair Axel
Sarah and Bernard Banner
Rosalind Baruch
Maureen Dewan and Stuart Belkin
Joyce and Jonathan Bendavid
Giti and Jack Bendheim
Sarah Roer Bendheim
Debra and Dennis Berman
Ruth Bernstein
Ellen and Morris Bienenfeld
Daniele and Steven Bleier
Cheryl and Evan Borenstein
Lynda and Ben Brafman
Mandy and Rubin Brecher
Amy and Josh Buchsbayew
Marcie and Kenneth Cappell
Judah and Ashley Charnoff
Lyn and Fred Cohen
Primary Care Ambulance Corp
Sandra Aguirre and Arthur Cotliar
Ava and Jeffrey Cushner
Ann and Jonathan Dachs
Charlotte Dachs
Merna and Jerome Davidowitz
Naomi and Aryeh Davis
Seri and Ziv Diamond
Barbara Ebin
Goldie and Neil Ellman

Esthie and Walter Feinblum
Surella and Joseph Feit
Rochel and Alan Feld
Galia Felemovicius
Naomi and Daniel Feuer
Sheila and John J. Flemm Foundation
Rebecca and Alex Folkman
Frimmit and Murray Forman
Arlene Fox
Linda and Milton Frank
Beth and Harry Fried
Joyce and David Friedman
Joseph & Rae Gann Foundation
Ilana and Jeffrey Gdanski
Rivka and Benjamin Gelbtuch
Marcia Genuth
George George
Rose Gerszberg
Ruth Gilad
Stacie Glick
Carol and David Goddard
Seryl and Elliot Goldofsky
Elisheva Teitz and Harris Goldstein
Helena and Marvin Goldstein
Tamar and Eric Goldstein
Talía and Sol Goldwyn
Irene and Robert Gottesman
Gourmet Glatt Emporium, Inc.
Miriam and Allan Greenspan
Renee and Brian Greenspan
Chanie and Alan Greif
Linda and Mark Gruenbaum
Sora and Eli Grunstein
H.C.L. Foundation
Yonina and Greg Haber
Sharon and Sinclair Haberman

Murray Halpern
Suri and Marc Helwani
Sharon and Matthew Herenstein
Abigail and Scott Herschmann
Berta Herzka
Greta and Eleazer Hirmes
Pamela Hirt
Sharon Hirt
Judy and Martin Hoffman
Shulamit Holzer
Honeycomb Jewish Youth Philanthropy
Ann Hornblass
Edith and Fred Horowitz
Marla and Avri Horowitz
Denise Hyman
J & R Affiliates Inc.
Michelle and Bezalel Jacobs
Jewish Community Foundation of
Greater Hartford Inc
Lisa and Erran Kagan
Michal and David Kahan
Aliza and Adam Karkowsky
Becky and Avi Katz
Tammy and David Katz
Adele and Moshe Katzenelenbogen
Annette and Gary Kaufman
Roberta Kaylie
Marjorie and Steven Kellner
Chani and Jay Kestenbaum
Susan Wagner and Adam Klinger
Gila and David Kolb
Sharon and Elliot Kolb
Dina and Michael Kollander
David Kramer
Marian (Getzler) and Jonathan Kramer
Elizabeth and Ron Krinick
Roselyn and J. Erwin Krinsky
Heidi and Eric Kuperman
Bryna and Joshua Landes
Cheryl and Lee Lasher

Linda and Murray Laulicht
Erwin Lazar
Zvi and Arlene Lefkovitz
Soshea Leibler
Gloria and Mark Levenfus
Michelle and Alan Levine
Richard Levine
Susan and Joel Lichtenstein
Chani (Anne) and Simon Lichtiger
Lauren and David Lieberman
Andrea Lipstein
Julie and Richard Lobel
Eve Locker
Lisa and Nathan Low
Millie and Larry Magid
Susan and David Mandel
Gitty and Sheldon Margules
Sheila and Marc Meissner
Joshua Melman
Bruce Mendelsohn
Robin Miller
Amanda and Michael Mizrahi
Esther and David Muschel
Helene and Steven Myers
Honey Myers
Marnie and David Nagel
Janine and Calvin Nathan
Toni and Reuven Nayowitz
Marisa and Bob O'Dell
Frieda and Victor Oelbaum
Melanie Oelbaum
Dina and Jonathan Ohebshalom
Odit and Charles Oliner
Michelle and Joel Orgel
Dawn and Moshe Orlinsky
Elana and Rony Oved
Tovia and Michael Paris
Mindy and Alan Peyser
Carol and Seymour Pinewski
Shirley and Stuart Podolsky

Jeremy Prawer
Anna and Morris Propp
Lisa and Edward Reich
Lisa and Yaron Reich
Rosalie and Leon Reich
Diane and David Rein
Robyn Pocker and Alan Rice
Chava Rose
Sondra and Arnold Rosen
Phyllis and Arthur Rosenbaum
Susan and David Rosenbaum
Judith and Lawrence Rosman
Audrey and Barry Rosner
Tamar and Ross Rothenberg
Dina and Joseph Rozenbaum
Shira Rubenstein
Lisa and Howard Rubin
Jill Block and Wade Rubinstein
Nechama and Daniel Saks
Leslie Dezer and Ricardo Salmon
Dena Salzberg
Andrea and David Sanders
Dahlia Farago and Tzvi Saperstein
Harriet and Paul Saperstein
Sharon and Raphael Sasson
Naomi and Kenny Schiff
Rena and Alan Schnall
Carine and Bruce Schneider
Sylvia Schonfeld
Debra Schreck
Sharona and Jacob Schulder
Gail Ellen Schupak
Janie and Robert Schwalbe
Alisa and Allen Schwartz
Elaine and Jan Schwartz
Erica and Robert Schwartz
Louis Schwartz
Nathan & Louise Schwartz
Tzedaka Fund
Abraham Sedgh

Shamir Seidman
Shari and David Shapiro
Tammy and Richard Shatz
Sari and Yaakov Sheinfeld
Sara Shraibman
Candice and Jonas Singer
Susan and Daniel Sklarin
Ruthie and Eliezer Stavsky
Miriam and Meyer Stender
Debra and Marvin Sternberg
Abby and Aaron Stiefel
Irving I. Stone Foundation
Zahava and Moshael Straus
Judy and Stewart Szydlo
Michael Taubenfeld
Chani and Jason Teigman
Ilana and Steven Tennenbaum
Naomi and Louis Tuchman
Sylvia Tuchman
Aviva and Avi Vogel
Ilana and Aaron Wallenstein
Debra and Neil Wallin
The Wanderer Family Foundation
Soshea and Jance Weberman
Rivkah and Noah Weg
Barbara and Alan Weichselbaum
Jerry and Fran Weinberg
Susan and Uri Weinstock
Anton Weiss
Caroline Weiss
Cathy and Allan Weiss
Shifra and Rephael Wenger
Lauren and Gavin Westerman
Jennifer and Michael Wiederkehr
Alyssa Wilk
Esther and Jerry Williams
Eric Winchel
Naomi and Steven Wolinsky
Linda and Arnie Yagoda
Sara and Chaim Zakheim

DONOR

\$500-\$999

Philip Aber
Arnold Andler
Myriam and Jay Auslander
Shira and Lawrence Baruch
Kathryn H. and Jon S. Behrens
Naomi Belizon
Debra Benovitz
Zelda and Sol Berger
Diane and Noah Berkowitz
Molly and Martin Berkowitz
Ellen and Edward Berman
Robyn and Steven Blumner
Shira and Zachary Borell
Silvia and Abraham Borenstein
Sara Boriskin
Marcy Millman and Simcha Brody
Michele and Mordechai Buls
Ellen F. and Barry Carron
Susan and Robert Chambre
Lillian and Irwin Chanales
Cheryl and Seth Chesner
Michael Chill
Esther and Ben Chouake
Aimee and Daniel Ciment
Adele and Alan Clingman
Adeena Cohen
Nathanel Cohen
Roberta and Mark S. Cohen
Bini and Adam Dachs
Babak Daftari
Sara and Adam Ehrenreich
Jennifer and Jason Eichenholz
Maureen and Larry Eisenberg
Brenda Elishis
Lauren and Ruven Ellberger
Zvi Engel
Renee and Scott Englander
Yael and Benjamin Englander
Linda and Allen Essner

Hinda and Eugene Farber
Jenny and Joseph Felder
Leora and Jay Fenster
Carol and Harold Finkel
Benjamin Fish
Pamela S. and Nussin Fogel
Zichron Yechiel Mechel Foundation
Judy and Mark Frankel
Adina and Steven Fredman
Marcia and Andrew Freedman
Susan and Howard Freundlich
Rachel and Steven Fried
Frances R. and Philip M. Friedman
Mati and Aaron Friedman
Joseph Frucht
Joyce and Gerald Fruchter
Noble Family Fund
Cheryl and Burt Gelberg
Leah and Menachem Gelbtuch
Tzivya and Moshe Gelbtuch
Rebecca and James Gelfand
Lea and Michal Geller
Debbie and Elliot Gibber
Mindy and Daniel Gindea
Jodi and David Goldberg
Judith and Michael Goldberg
Lorraine and Steven Goldsmith
Annie and Hyman Goldstoft
Caroline and Martin Goldwyn
Aviva and Zev Golombeck
Debra and Sheldon Green
Eda and David Greenbaum
Shira R. and David S. Greenberg
Evelyn and Manny Gross
Marilyn and Zev Grossman
Judith and Martin Grumet
Chanie and Leonard Grunstein
Suzanne and Barry Gurvitch
Mindy and Avrum Haar

Nancy Hain
Suzanne Hanau
Vicky Harari
Victoria and Raymond Harari
Diana Bienenfeld Harkham
Hinda and Barry Herman
Jacqueline L. and Steven Herman
Alissa and David Hersh
Evan Hertan
Greta and Eli Hirmes
Debra and Martin Hirsch
Doris Hirsch
Olga Hirsch
Janet and Kenneth Hoffman
Sariette and David Hornblass
Corey Horowitz
Shira and Ari Hoschander
Michelle Langer and Menachem Hursarsky
Doba and Kalman Isaacs
Rebecca P. and Zevi Isseroff
Shira and Joel Jacobs
Rena and David Jaroslawicz
Debra and Jonathan Joels
Susan and Samuel Joffe
Ayala Justin
Vivian Kalish
Dina Kalnicki
Melanie and Bernard Kaminetsky
Lina and Felix Kanchik
Solomon Kapelyus
Judy and Ronnie Karp
Altie Karper
Jessica and Jonathan Katz
Magda and Harold Katz
Sharon and Howard Katz
Micah Kaufman
Betty H. and Arthur D. Kay
Abby and Jacob Kellner
Jessica and Jeremy Kirschner
E. Samuel Klibanoff
Zahava and Jordan Kolb
Lilli H. and Irwin Koppelman

Farouz and Dafna Koshanfar
Debbi and Lee Krantzow
Sara and Alan Kravitz
Carolyn and Leonard Langer
Rebekah Langer
Aaron Laub
Ann Lamet and Alex Lebowitz
Adi and Herbert Leibel
Andrew Lerner
Susan and Daniel Levin
Barton Levine
Dara and Oren Lieber
Elaine and Scott C. Liebman
Ilana and Brian Lipman
Georgie and Saul London
Bruce and Autumn Mael
Elana and Ami Mandel
Nina and Zvi Marans
Tana and Arnold Markoe
Shari and Yaakov Markovitz
Joshua Mayer
Dinah and Andrew Mendes
Brooke Mendlowitz
Metropolitan Plumbing & Heating Corp
Suri and Jan Meyer
Ilanit Motovich
Joshua L. Muss Family
Jordanna and Marc Nadritch
Sonja and Gary Nadritch
Navah Newman
Sydney Novetsky
Esther R. and Kenneth Nyer
Alan Operman
Elaine and Marc Oppenheimer
Cali and Moshe Orenbuch
Mindy and Henry Orlinsky
Penny Ostreicher
Deena and Gilad Ottensoser
Sarah and Yaakov Ottensoser
Sharon and Solomon Packer
Amanda and Hillel Parness
Miriam and Ira Parness

Vera Perlman
Tali and Justin Pines
Lizzie and Michael Pinewski
Sandy and Avi Piontnica
Stephanie and Richard Pomerantz
Jennifer Prince
Protect Your Family
Naomi Pugatsch
Eliane and Joseph Rackman
Shelly and Behzad Rasekh
Judy and Jacob Reiner
Zahava and Hank Reinhart
Elizabeth B. and William Roe
Ayelet and Brian Rosen
Ayelet Rosen
Edyie and Elliot Rosenfeld
Nancy and Stanley Rosenfeld
Naomi and Elliot Rosner
Lisa Rudolf
Arthur Dobrzyn Rypin
Benevolent Assosiation
Erika Sabbagh
Michelle Sabo
Sheira and Steven Schacter
Mindy Schall
Jonathan Scheiner
Mark Schiffman
Sara and Richard Schlusel
Judy and Benjamin Schmutter
Elana and Ashie Schreier
Deborah and Howard Schub
Howard Schulman
Dasi and Jeremy Schwalbe
James Schwalbe
Betty and Arthur Schwartz
Simi and Sralli Schwartz
Yael and Ari Schwartzbard
Sharon and Michael Segal
Suzanne J. and Robert Segal
Ranit and Gabriel Shiff
Jessica and Evan Shusterman

Bonnie and George Silfen
Eliza Silver
Arlene Silverstein
Gail and Steven J. Siskind
Cindy and Sheldon Small
Aliza and Elizabeth Solomon
Malky and Jay Spector
Sharon Spencer
Rachel and Paul Spirgel
Nicole and Jeffrey Spivak
Jessica and Noah Steinberg
Cynthia and Abe Steinberger
Sandy and Avi Steiner
Caron L. and Michael Strulowitz
Rosalind and Henry Swergold
Joseph Szydlo
Lipaz and Israel Tannenbaum
Tovah and Robert Thee
Brenda and Elihu Turkel
Murielle M. and Steve Uretsky
Rachel Vario
Jake Walden
Herb Wallenstein
Max Wallins
Kimmy and AJ Warner
Alisa and Robert Watman
Helen and Ernst Stone Weglein
Estelle and Leo Weiner
Lenore Weinstein
Judith Weintraub
Rochelle and Joseph Weisstuch
Roselyn Weitzner
Sharon and Stephen Wieder
Jaqueline and Robert Willens
Rebecca and Daniel Wolf
Amy and Joel Wolfson
Sara Zakheim
Elaine and Morton Zinberg
Ruth and Stuart Zisholtz
Michele and Irving Zoltan

**We thank
you for
supporting
our mission
of CARING
FOR A
NATION and
transforming
lives.**





212 564 9045

500 7th Avenue, 8th Fl

New York, NY 10018

info@emunah.org

Join us at www.emunah.org/donate

Emunah of America is a 501 (c)(3) charity organization

Platinum
Transparency
2023

Candid.